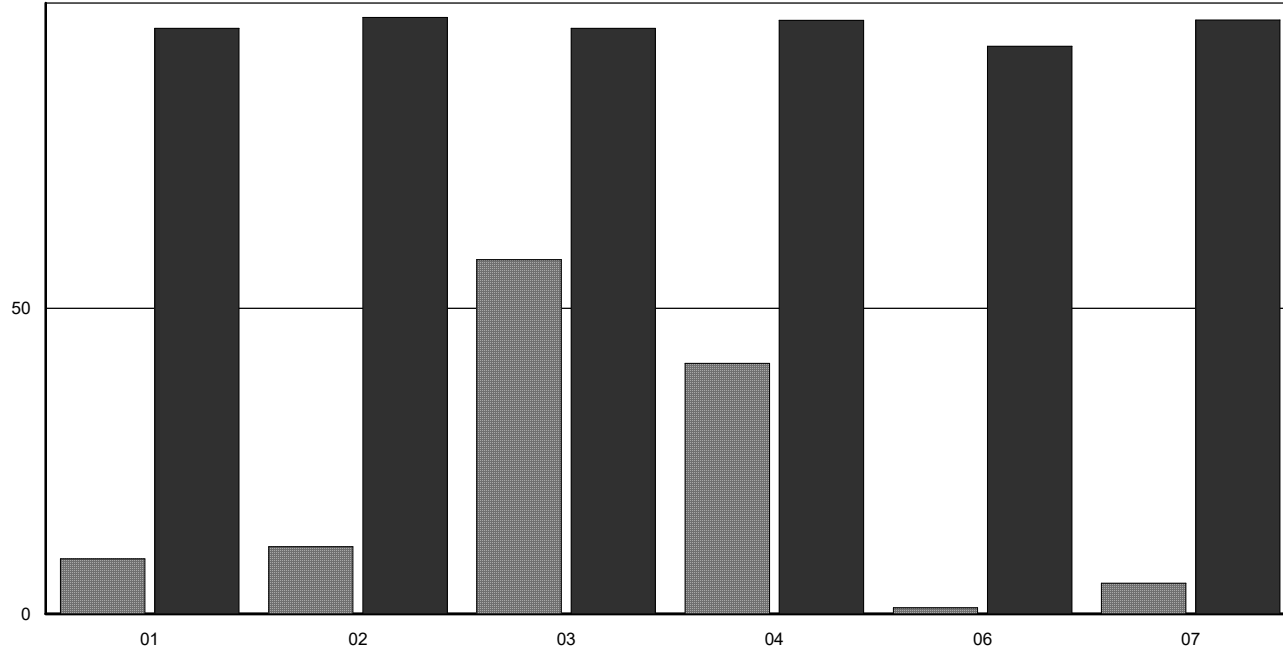


## New London: Median A/S Ratio by Zone



|    |                     | ▨ # of Parcels | ■ Median A/S x 100 |
|----|---------------------|----------------|--------------------|
| 01 | R1 - WATER & SEWER  | 9              | 95.83              |
| 02 | R1 W/O WATER & SEWI | 11             | 97.62              |
| 03 | R2 - RESIDENTIAL    | 58             | 95.85              |
| 04 | ARR - AGRI/RURAL RE | 41             | 97.18              |
| 06 | FOREST CONSERVATIC  | 1              | 92.90              |
| 07 | COMMERCIAL          | 5              | 97.23              |
|    |                     | <b>125</b>     |                    |