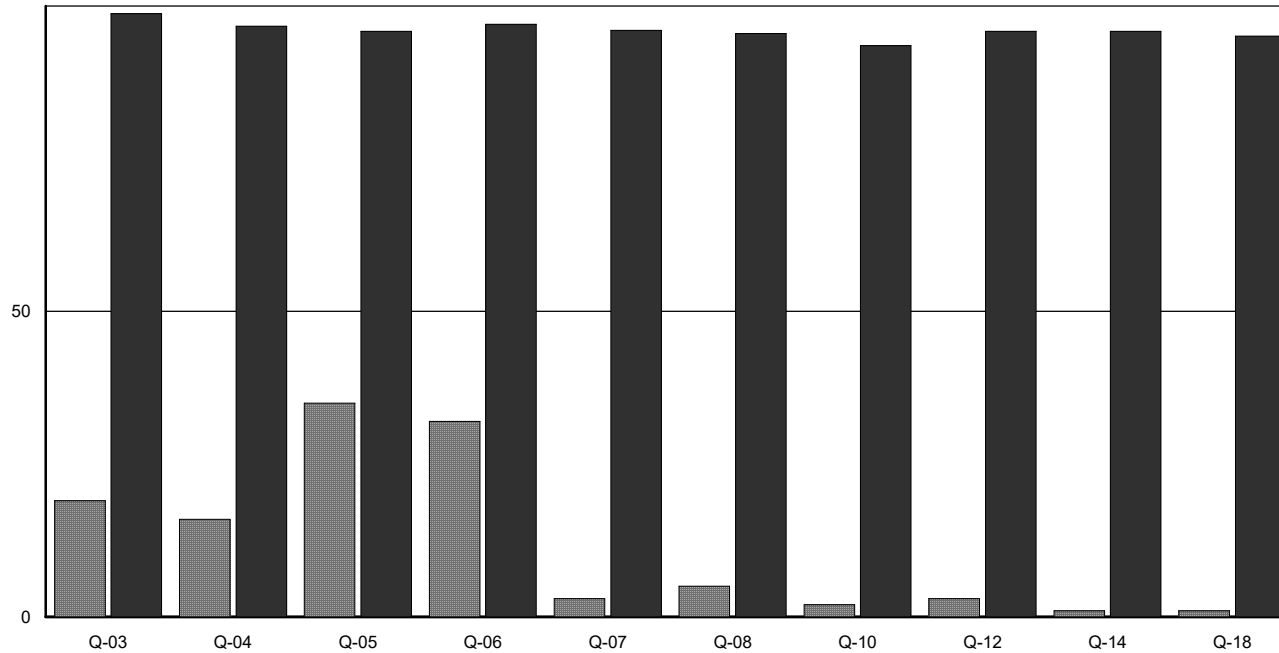


## New London: Median A/S Ratio by Building Quality



		▨ # of Parcels	■ Median A/S x 100
Q-03	A/D 03 BASE 100	19	98.76
Q-04	A/D 04 BASE 110	16	96.69
Q-05	A/D 05 BASE 125	35	95.85
Q-06	A/D 06 BASE 140	32	97.00
Q-07	A/D 07 BASE 150	3	96.01
Q-08	A/D BASE 08 165	5	95.48
Q-10	A/D 10 BASE 195	2	93.48
Q-12	A/D 12 BASE 250	3	95.84
Q-14	A/D 14 BASE 290	1	95.83
Q-18	A/D 18 BASE 380	1	95.05