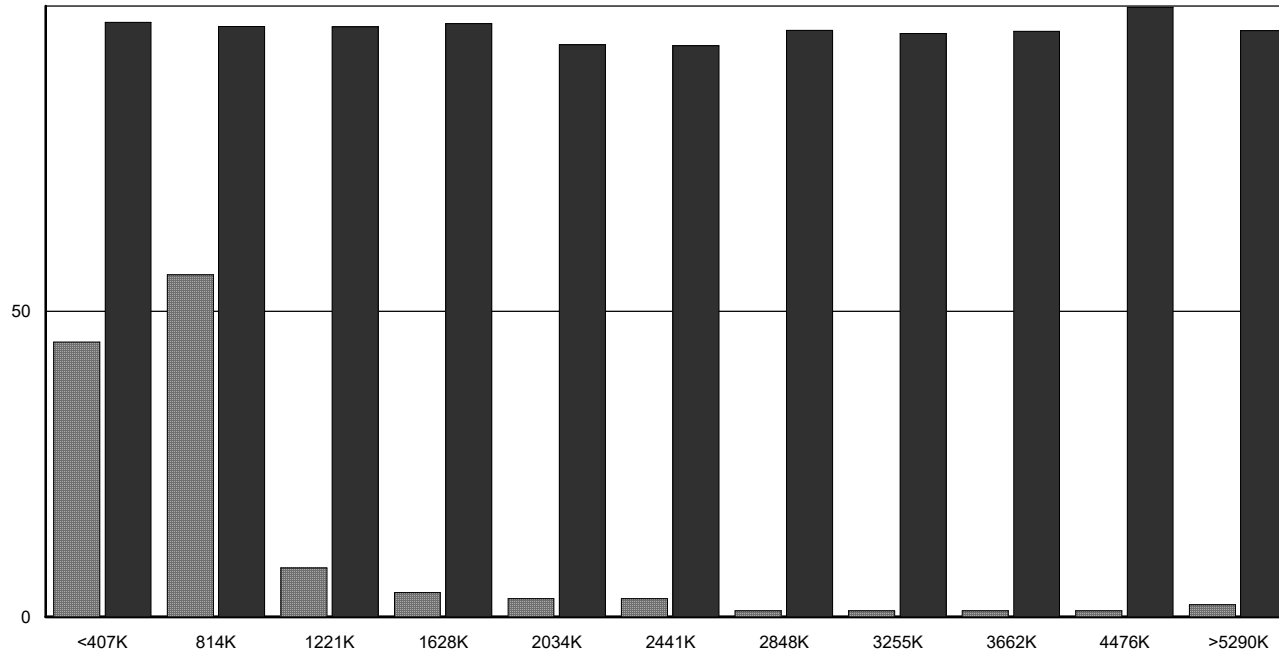


## New London: Median A/S Ratio by Sale Price



		▨ # of Parcels	■ Median A/S x 100
<407K	<= \$406,897	45	97.30
814K	\$406,898 to \$813,794	56	96.66
1221K	\$813,795 to \$1,220,691	8	96.59
1628K	\$1,220,692 to \$1,627,588	4	97.13
2034K	\$1,627,589 to \$2,034,485	3	93.63
2441K	\$2,034,486 to \$2,441,382	3	93.49
2848K	\$2,441,383 to \$2,848,279	1	96.00
3255K	\$2,848,280 to \$3,255,176	1	95.48
3662K	\$3,255,177 to \$3,662,073	1	95.84
4476K	\$4,068,971 to \$4,475,867	1	99.76
>5290K	> \$5,289,661	2	95.94

125