

Project Site 8 Map  
Fieldstone Lane and County Road



Site Map – Location A – towards County Road



Site Map – Location B – towards County Road

093-019-000  
**BAIGERT LIMITED PTNSHP**  
**RUDOLPH**  
 PO BOX 1686  
 NEW LONDON, NH 03257

093-007-000  
**K. TUTHILL**  
 PO BOX 922  
 NEW LONDON, NH 03257

092-009-000  
**W. D. GREEN JR.**  
**REVOCABLE TRUSTEE**  
 139 BURRIE HILL ROAD  
 NEW LONDON, NH 03257

093-012-000  
**R. LAUGHINGHOUSE & L.**  
**ROSS**  
 PO BOX 273  
 NEW LONDON, NH 03257

**LEGEND**

- PARCELS
- OHU- OVERHEAD UTILITY LINE
- △ CONTROL POINT
- ⊙ UTILITY POLE
- EDGE OF ROAD
- - - 100 - - - EXISTING MAJOR CONTOUR
- - - 99 - - - EXISTING MINOR CONTOUR
- - - 100 - - - PROPOSED LIMIT OF DISTURBANCE (LOD)
- - - 100 - - - PROPOSED MAJOR CONTOUR
- - - 99 - - - PROPOSED MINOR CONTOUR
- - - 99.7 - - - PROPOSED DECIMAL CONTOUR

POINT NUMBER CP1  
 INTERSECTION  
 N. 331624 1114  
 E. 892689 3142  
 ELEV. 100.00'

EX. STACK STONE HEADWALL  
 TOP ELEV. = 108.0  
 INV. OUT ELEV. = 105.3

PR. 36"x36" KNOCKOUT CATCH BASIN  
 [SEE DETAIL SHEET 7]  
 PR. GRATE ELEV. = 111.3  
 PR. INV. OUT ELEV. = UNKNOWN  
 PR. BASE ELEV. = 107.6'  
 \*MIN. SUMP BELOW INV. OUT = 8"

COUNTY ROAD SWALE ALIGNMENT

PR. CRUSHER RUN GRAVEL INLET CONE  
 3' WIDTH AROUND PR. CATCH BASIN  
 12" MIN. THICKNESS

PR. 48" DIAMETER  
 DEEP SUMP CATCH BASIN  
 [SEE DETAIL SHEET 7]  
 PR. RIM ELEV. = 101.7  
 PR. INV. OUT ELEV. = 97.7  
 PR. BASE ELEV. = 93.7

PR. CHECK DAM (TYP.)  
 [SEE PROFILE SHEET 6;  
 SEE DETAIL SHEET 7]

FIELD STONE LANE SWALE ALIGNMENT

PR. LIMIT OF DISTURBANCE

PR. SEDIMENT  
 TRAP/PLUNGE POOL  
 [SEE PROFILE SHEET 6;  
 SEE DETAIL SHEET 7]  
 MAX. DEPTH = 2.2'  
 TOP WIDTH = 10.0'-12.0'  
 BOT. WIDTH = 3.0'

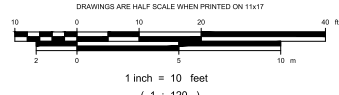
EX. STACKSTONE WALL

REPLACE EX. SOFT SHOULDER  
 WITH GRAVEL SWALE

**PROPOSED CONDITIONS**  
 Scale: 1" = 10'

FILE: FieldStone.dwg

#	DATE	DRWN	CHK'D	APP'D	DESCRIPTION



**STONE ENVIRONMENTAL**  
 535 Stone Cutters Way / Montpelier / VT / 05602 / USA  
 802.229.4541 / info@stone-env.com / www.stone-env.com

MESSER POND BMPS  
 AT FIELD STONE LANE  
 PROPOSED CONDITIONS  
 NEW LONDON NEW HAMPSHIRE

SHEET NO. **5**



**Project Site Map  
Tracy and Bog Roads**



**Summer**



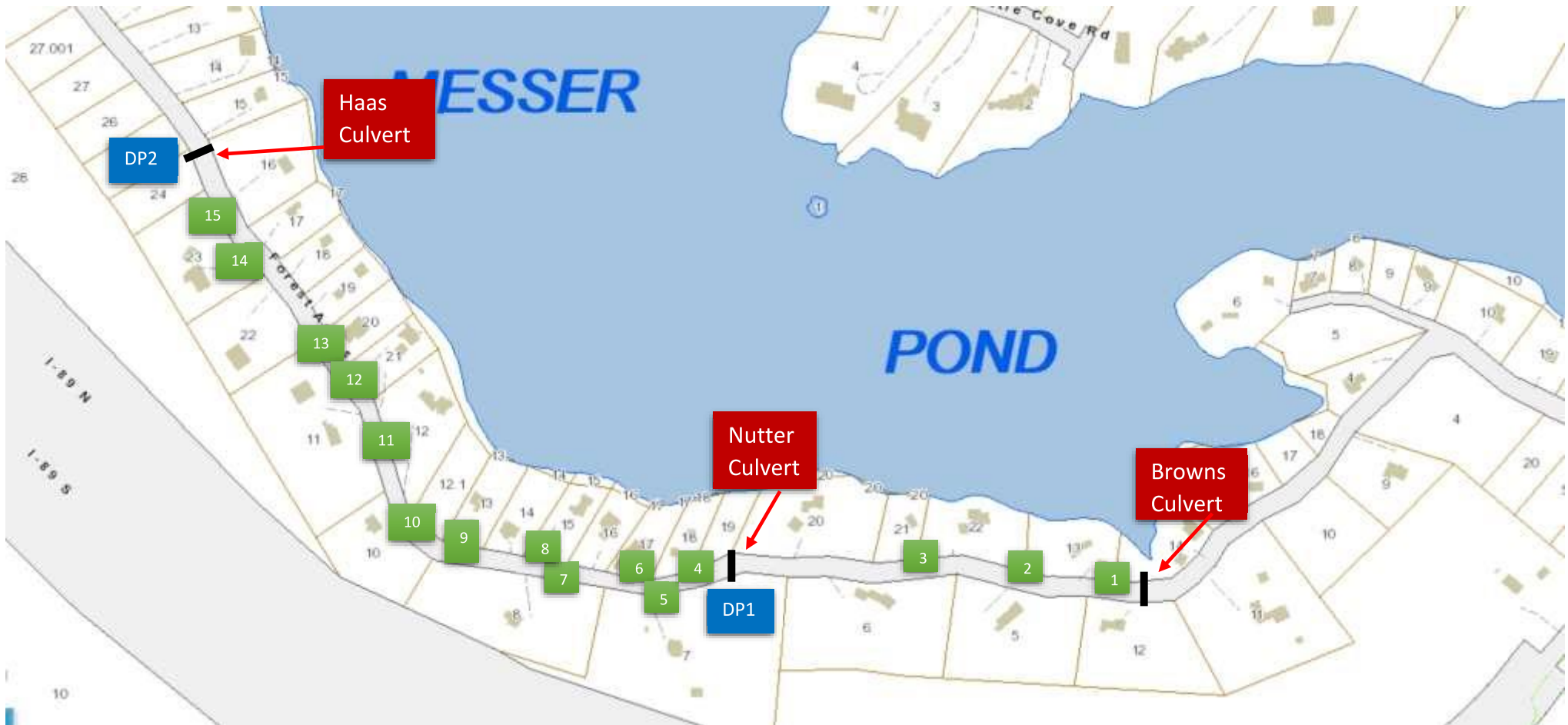
**Late Fall**



**Spring**



**Spring**



### Forest Acres Road Survey – 7/17/2019 – Project Site Notes

1. Exiting ditch swales in need of maintenance/repair: 9, 10, 14
2. Proposed new swale/check dam locations: 1, 2, 3, 4, 5, 6, 7, 8, 11, 12, 13, 15
3. Proposed locations of detention pools: DP1, DP2