



Police Facilities Advisory Committee



Committee and Key Partners



Town Representation

- Bebe Casey, *Selectman*
- Chief Emily Cobb, *Police*
- Kim Hallquist, *Town Administrator*
- Bill Helm, *Selectman*
- Janet Kidder, *Selectman*
- Adam Ricker, *Planning & Zoning*

Committee

- Annie Beck
- Jim Casey
- Jeff Hollinger
- Lt. David Keith
- Bruce Parsons
- Ashley Seybold
- Phil Sherman
- Malaika Sidmore
- Susan Warren

Partners

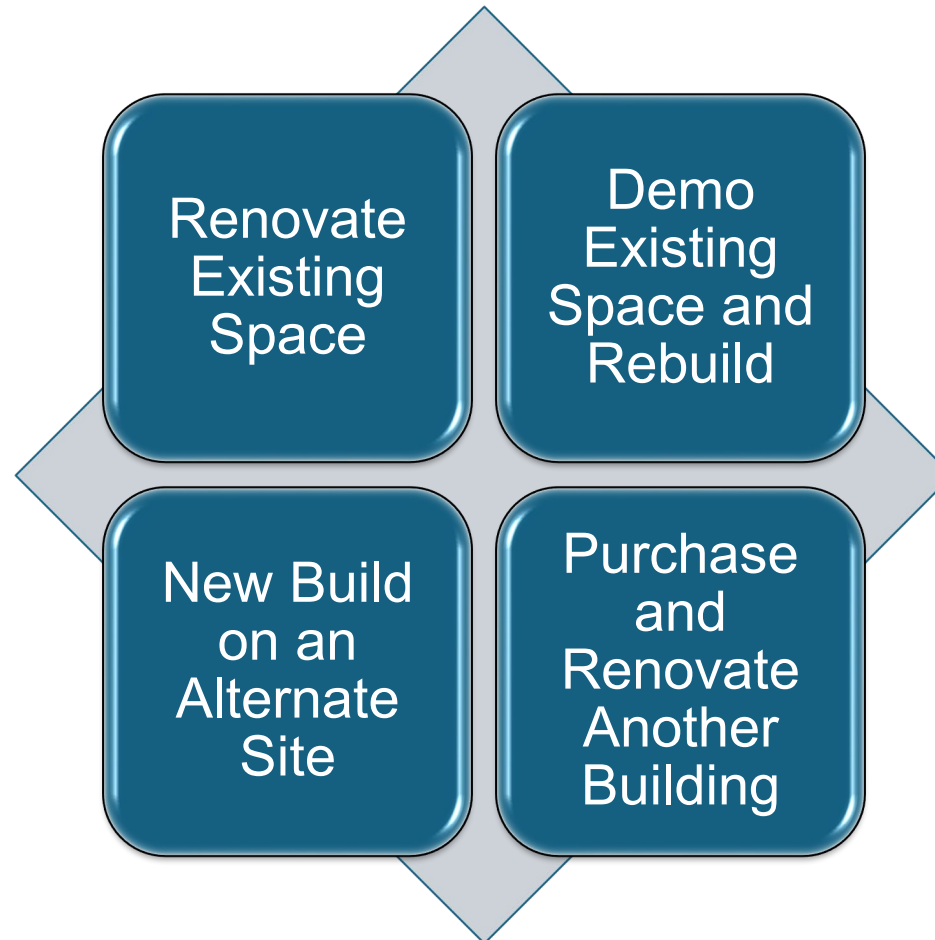
- John Adams, *LBPA*
- Tony Diluzio, *Colliers Engineering*
- Bob Robics ek, *LBPA*

Community
Members



Purpose

To evaluate plans, data and information compiled by the Consultants for the purpose of advising the Selectmen on the preferred path to take in improving the facilities to be used by the police and dispatchers. The Committee will also assist the Selectmen in efforts to educate the public on the various options available.





Did You Know?

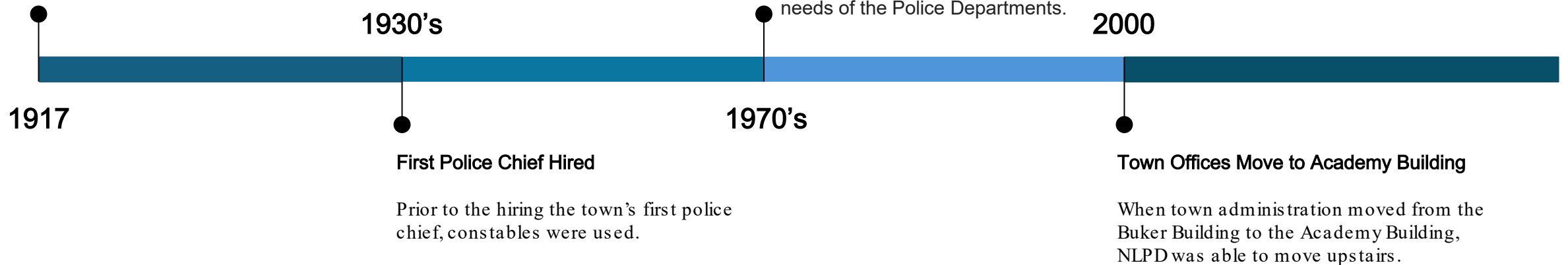
The location of New London's Police Station has remained largely unchanged and unexamined for over a century.

Whipple Hall Construction Plans

A lock-up space was included in the 1917 building plans for Whipple Hall, located in the basement.

First Mention of Addressing Police Station Needs

When the Fire Department relocated from Pleasant Street to Main Street, there was mention of once the Fire Department got its new building the town should address the needs of the Police Departments.





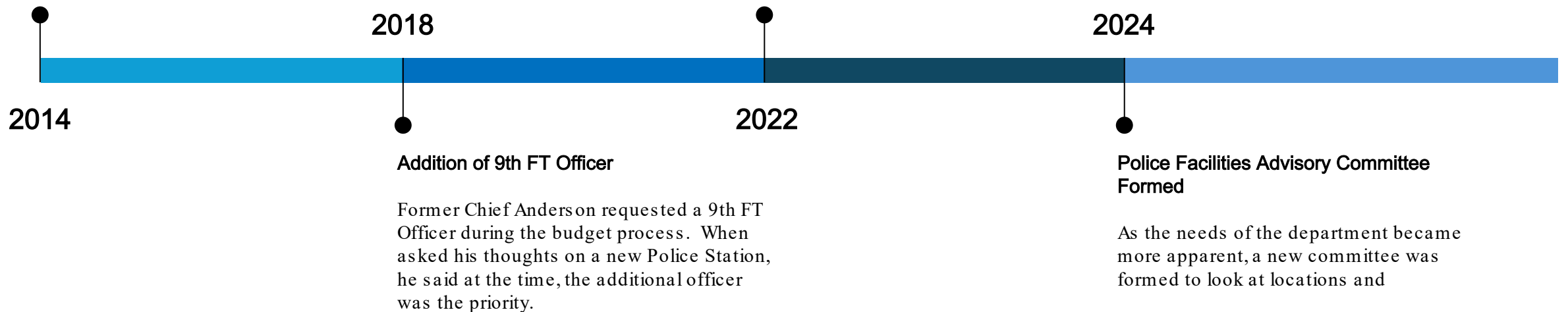
...Timeline Continued...

Discussions Begin

As part of a large maintenance project to Whipple Hall, the question of whether the building was still an adequate location for Police, Dispatch and Recreation was raised.

Subcommittee Formed from Building + Facilities Committee

Committee formed to look at potential sites for a new Police Station. Recommendation to Selectboard was added to town ballot and not approved by taxpayers.





Current Facility Highlights

The current police facility has served the department for decades, but over time, the department has outgrown the space. The facility no longer meets modern industry standards.

Location

- Central to town
- Shared driveway with private residence
- No secured area or ability to add on
- Fishbowl

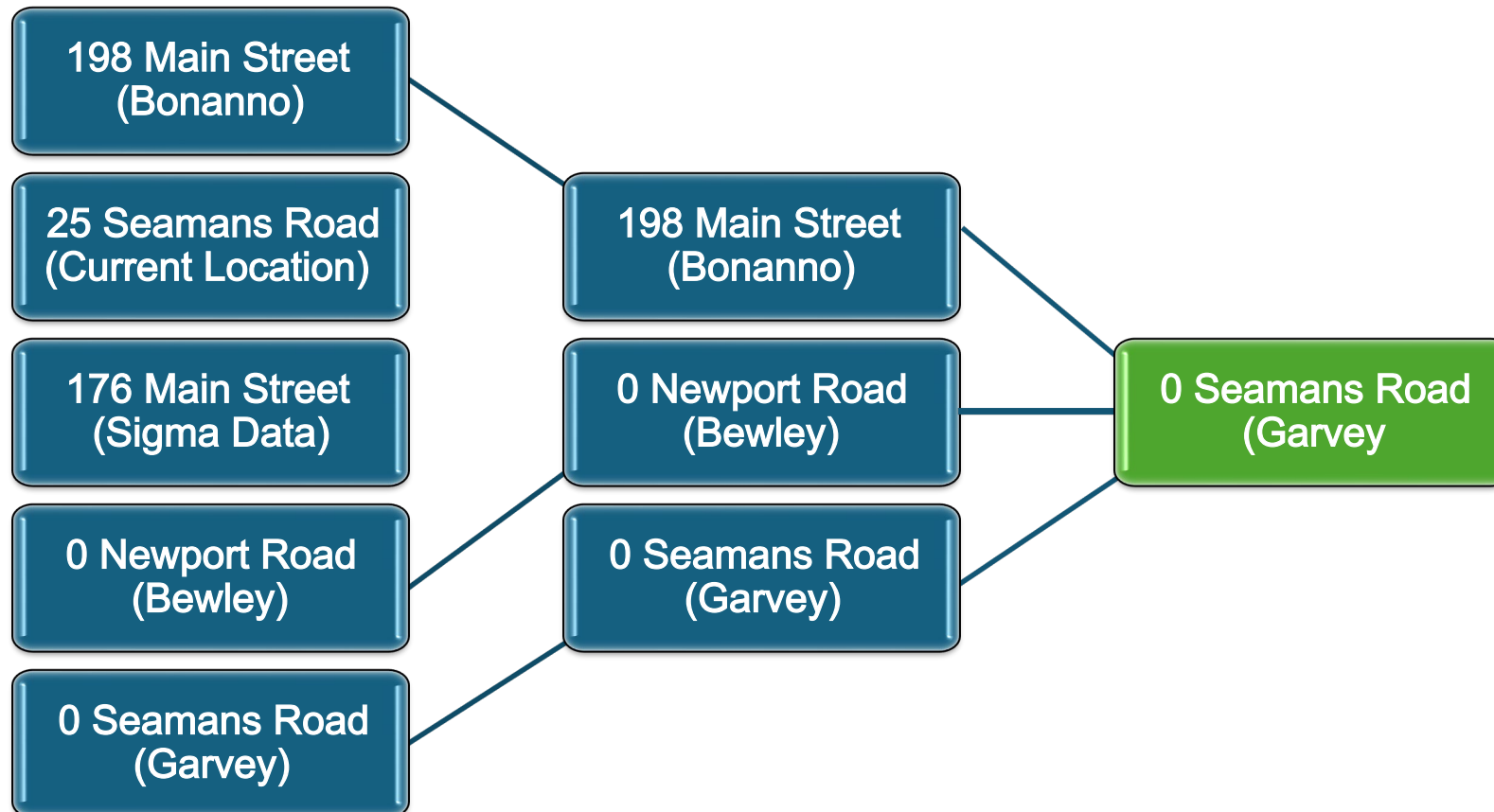
Facilities

- Sally port is far away from central operations
- Not ADA compliant
- Floor to ceiling windows facing town green
- Doors and windows don't meet industry code standards
- Sprinkler riser & critical infrastructure systems in same room



Discussed Locations

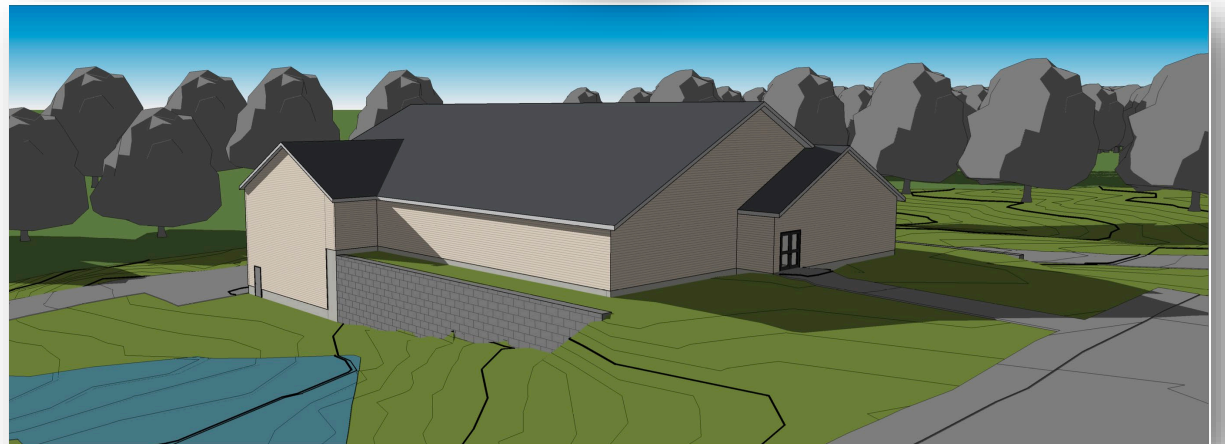
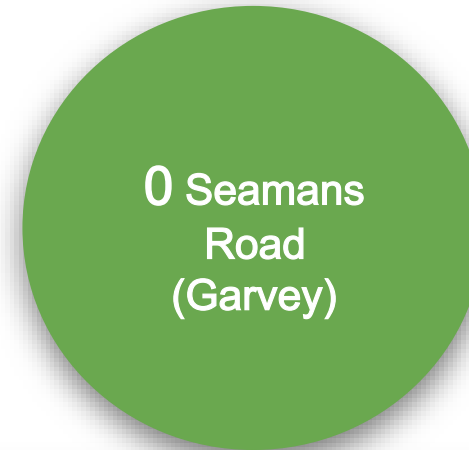
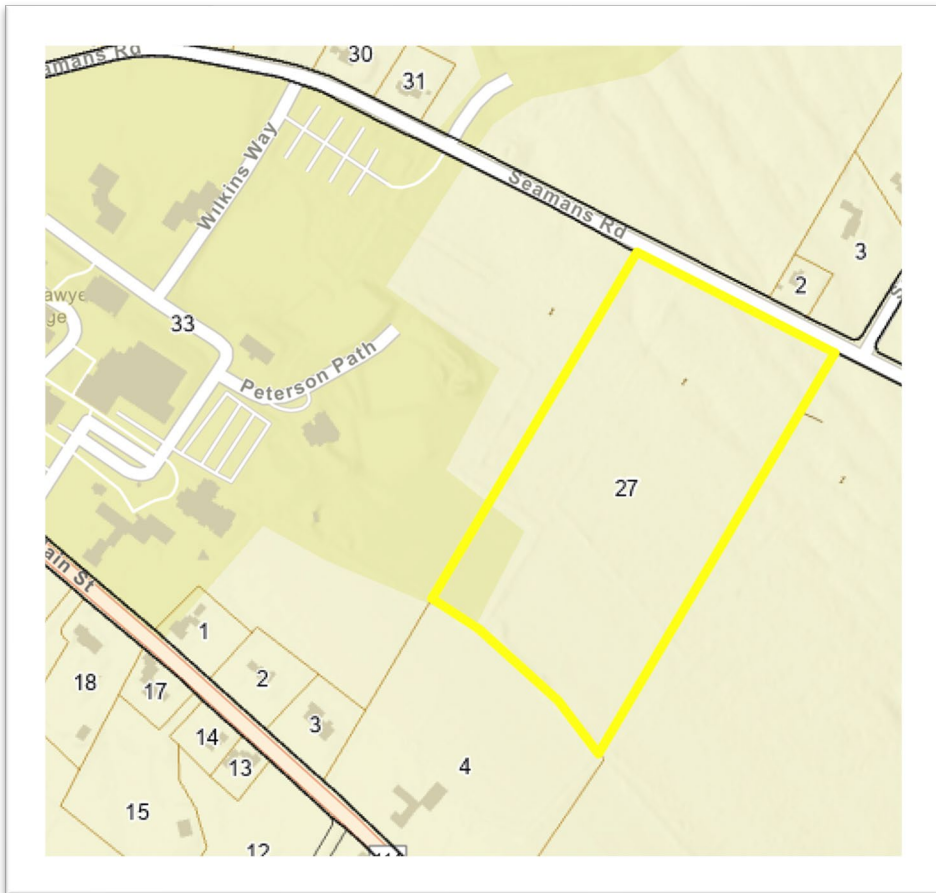
At the committee's inception, several potential locations for the NLPD were identified. Over the course of several months, the Selectboard, Chief Cobb, LBPA, and Colliers collaboratively visited these sites and provided the committee with detailed information about each location.





Final Recommendation

With a majority vote, PFAC determined that 0 Seamans Road (Garvey) is the location that best meets the current and future needs of the NLPD.





What's Next?

DECEMBER

- PFAC will review properties, finalize recommendations for the Selectboard, and present its recommendation at the Winter Community Gathering

JANUARY

- Finalize 0 Seamans Road agreement by 1/9.
- PFAC: police station sessions
- Selectboard: funding and taxpayer impact
- Prep for budget hearing

FEBRUARY

- Budget hearing on Feb 5 to secure Budget Committee support
- Selectboard: determine bond size.
- PFAC: police station sessions
- Selectboard: funding and taxpayer impact sessions

MARCH

- PFAC: police station sessions
- Selectboard: funding, bonds, and taxpayer impact sessions
- Taxpayers vote at Town Meeting