

Cox Letter RE: Public Hearing for May 12, 2022, delivered by email and hand delivered to Town Office

Donald and Susan Cox
165 Everett Park
New London, New Hampshire 03257

Chief Emily Cobb, New London Police Department
Chief Jay Lyon, New London Fire Department
Chair Nancy Rollins, Board of Selectmen, Town of New London
Janet Kidder, Selectperson, Town of New London
William Helm, Selectperson, Town of New London
Kimberley Hallquist, Town Administrator, Town of New London

April 28, 2022

Re: Request to Establish a Permanent Parking Guideline for Everett Park, including consideration for utilizing the even-numbered side and installing signs for clarity.

On April 14th, at a regular meeting of the New London Board of Selectmen, “Parking on Everett Park” was on the agenda. At the end of discussion, Chair Rollins stated that a public hearing would be required, scheduled for May 12, 2022. We submit this letter and exhibits in preparation for the planned hearing on May 12th, regarding parking on Everett Park, Pressey Court, and any additional parking concerns related to the New London Barn Players.

Exhibit A – from the Tri Town NH GIS (Town of New London website): map covering Everett Park to illustrate road frontage available for parking on either the odd or even side (the block between Parkside Road and Williams Street) including view of intersection of Williams Street and Everett Park

Exhibit B - from the Tri Town NH GIS (Town of New London website): map covering Pressey Court and Sawyer Lane

Our requests and concerns specifically relate to our section of Everett Park, from Parkside Road to Williams Street. We submit the map of Pressey Court and Sawyer Lane to illustrate that there is a major difference between the two areas – that Everett Park is a through street and Pressey/Sawyer is a dead end at both ends, possibly presenting entirely different solutions to the dilemma of parking.

Our home is located on Lot 28. We request serious consideration be given to having one-sided parking on the even-numbered side of Everett Park (across the street from our house), in the section between Parkside Road and Williams Street. We believe that the available parking will not be reduced and there would be an improvement in visibility at the intersection of Williams Street and Everett Park. On the even-numbered side, this would mean parking from 154 Everett Park to 182 Everett Park (Lots 12 and 11.) The New London Barn Players is an abutter to our lot (the Barn is Lot 41) and our lot is more impacted than other private properties on Everett Park. The parking lot has expanded and is now closer to our back property line. The privacy at our home will be reduced if our property is surrounded by parked cars on front and back sides during

Cox Letter RE: Public Hearing for May 12, 2022, delivered by email and hand delivered to Town Office

the summer months. Our neighbors across the street, Nan Putnam and Ed Blanchard, 154 Everett Park, are in support of having the one-sided parking on their side of the street.

There has never been a permanent parking design for Everett Park since it was a seasonal need, based on performances at the New London Barn Players. We have been told that there were years where parking alternated from odd to even. In 2019, the most recent year of live performances at the Barn Playhouse, parking was on the odd-numbered side. (See minutes from Board of Selectmen Public Hearing July 8, 2019) During past summers, cars parked on the odd-numbered side have not observed parking setbacks from the intersection of Williams Street and Everett Park, causing visibility issues for drivers exiting from Williams Street to Everett Park. Everett Park is a pedestrian-friendly street, frequently used by children, adults, and bicyclists -- this concerns their safety as well.

We request signs to clearly indicate where parking is allowed. We anticipate that attendees of the New London Barn Players could potentially choose to park on this street throughout all twelve (12) months of the year, making the need for signs greater.

We hope that the permanent parking plan will be beneficial to everyone.

Thank you in advance for your consideration.

Donald Cox
Susan Cox
165 Everett Park
New London

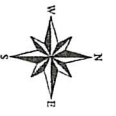


Exhibit A

Tri Town, NH

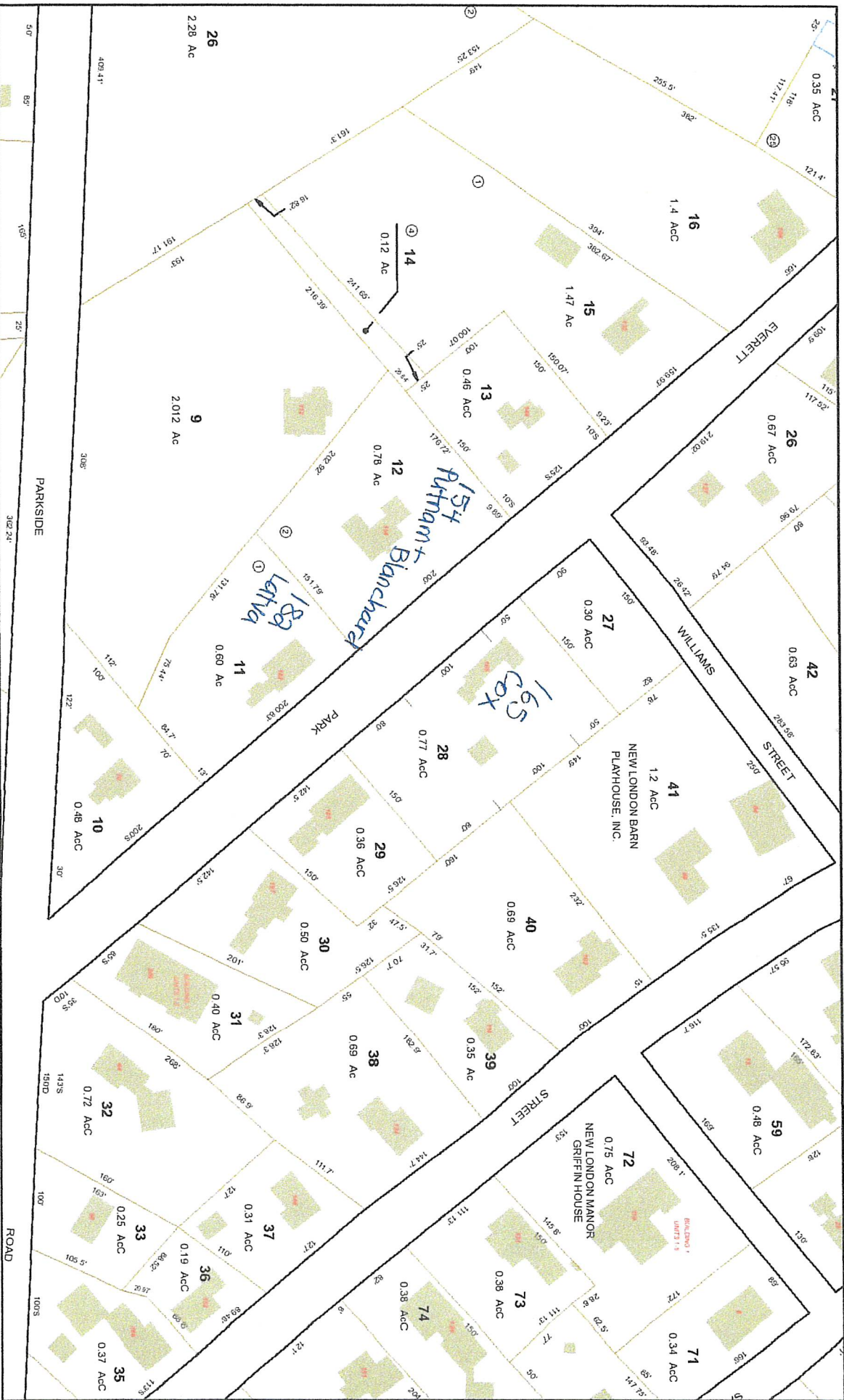
April 28, 2022

1 inch = 136 Feet



www.cai-tech.com

CAI Technologies
Precision Mapping. Computer Solutions.



Data shown on this map is provided for planning and informational purposes only. The municipality and CAI Technologies are not responsible for any use for other purposes or misuse or misrepresentation of this map.

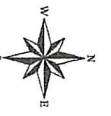


Exhibit B

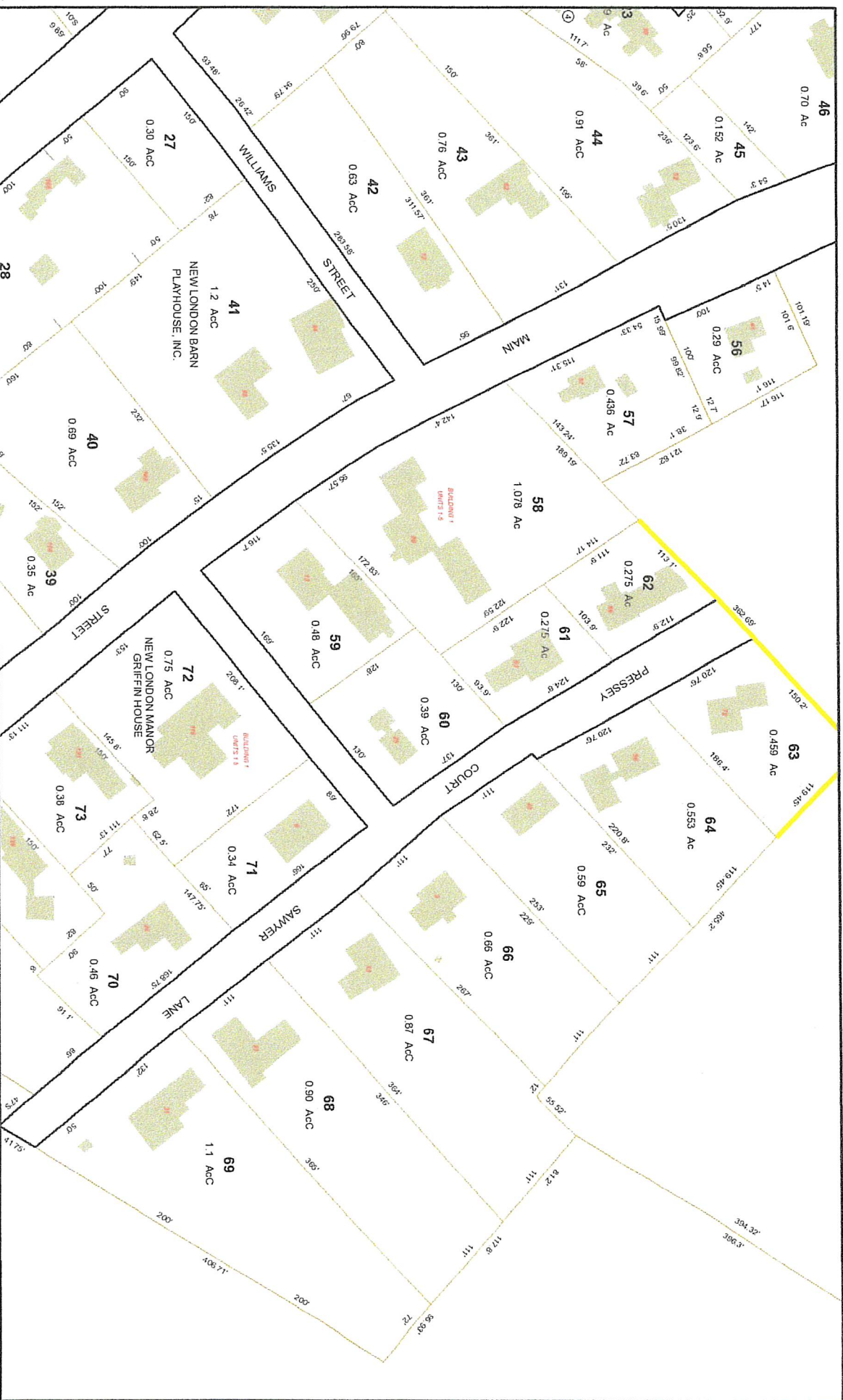
Tri Town, NH

April 28, 2022

1 Inch = 136 Feet

0 136 273 410

www.cai-tech.com



Data shown on this map is provided for planning and informational purposes only. The municipality and CAI Technologies are not responsible for any use for other purposes or misuse or misrepresentation of this map.