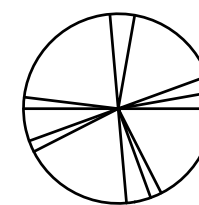

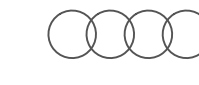

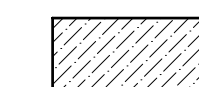


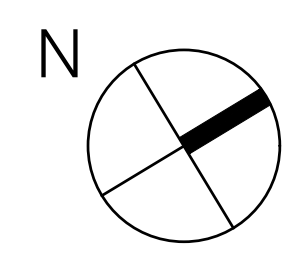
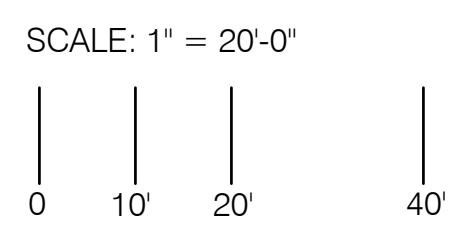
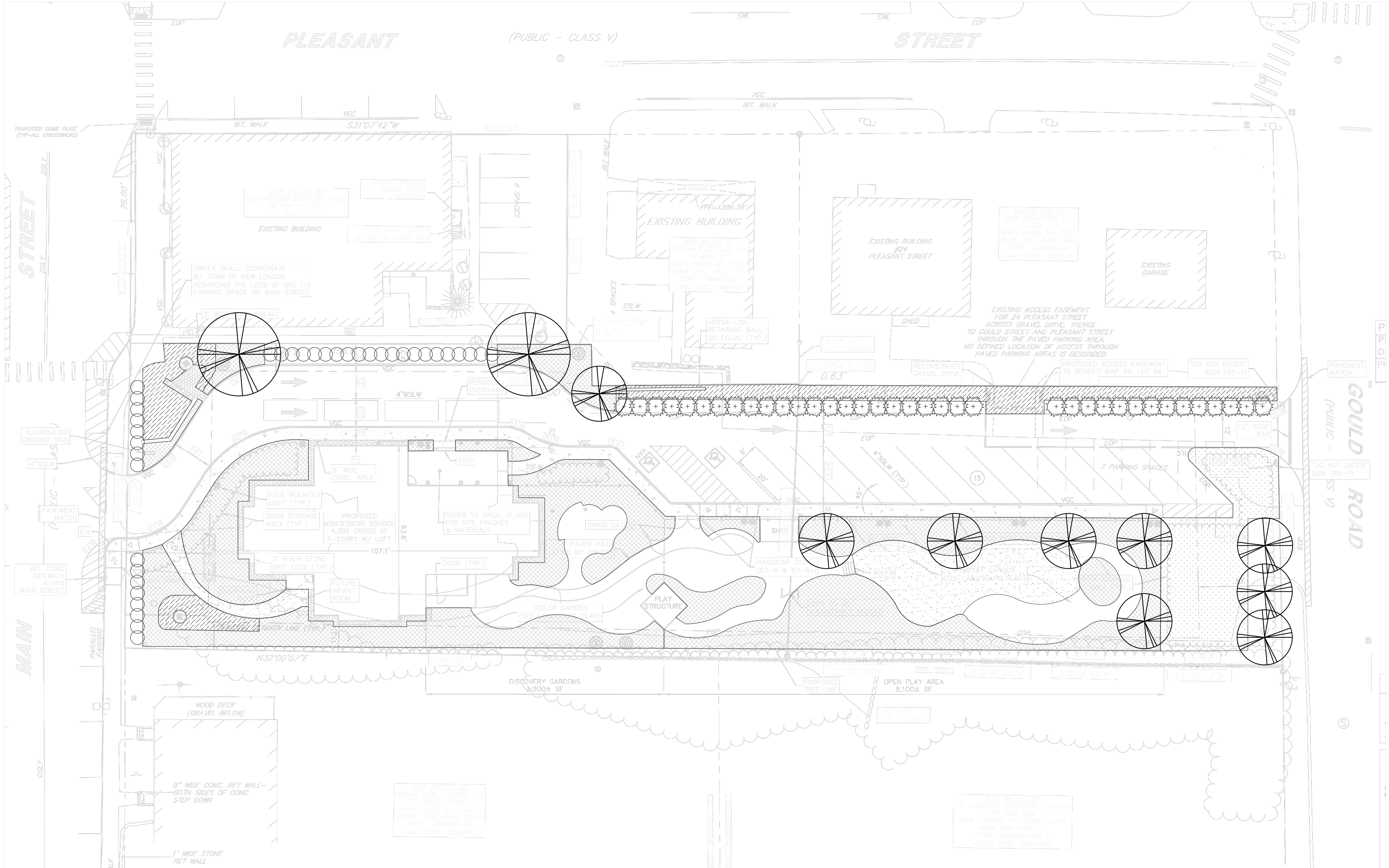


LEGEND

-  Trees
-  Evergreen Hedge
-  Herbaceous Hedges
-  Mixed Shrub and Herbaceous Planting
-  Rain Garden Native Planting
-  Lawn
-  Meadow

PRELIMINARY PLANTING NOTES

- TREES**
Deciduous trees placed on property edges for shade and screening. Ex: *Acer rubrum*, *Crasnegus inermis*, *Populus alba*. Edible fruit trees placed within fenced areas. Ex: *Malus sp.*, *Prunus sp.*
- EVERGREEN HEDGES**
Tall (> 6ft) evergreen hedges for screening placed along property edge and opposite parking. Ex: *Thuja occidentalis sp.*
- HERBACEOUS HEDGES**
Low (~3ft) flowering perennial or shrubs for definition along sidewalk and property line. Must endure snow removal conditions. Ex: *Baptisia australis*, *Hydrangea paniculata sp.*, *Swida sericea*
- MIXED SHRUB AND HERBACEOUS PLANTING**
Flowering shrubs, perennials, ground covers and grasses are mixed to create inviting planting arrangements. Within fenced areas, plants are safe, non-toxic and provide sensory experiences. Ex: *Chionanthus virginiana*, *Fragaria sp.*, *Stachys sp.*, *Vaccinium corymbosum*
- RAIN GARDEN NATIVE PLANTING**
Within important drainage infrastructure, herbaceous plants that are suitable for the base, slope and perimeter of the system. Examples: *Clethra alnifolia*, *Comptonia peregrina*, *Eupatorium purpureum*, *Iris versicolor*, *Rhus aromatica*, *Carex sp.*
- LAWN**
Traditional fescue mix appropriate for sun and shade conditions, to be regularly maintained.
- MEADOW**
Fescue and native grass planting, mixed with spring flowering bulbs, native wildflowers, to be mown less frequently.



DRAFT FOR REVIEW

DRAWING TITLE
Preliminary Planting Plan

DATE May 19, 2025
SCALE 1" = 20' - 0"

REVISIONS	DATE	DESCRIPTION

DRAWING NO.
L1