

S the NOW HOUSE farm

Our property is a little more than 6 acres and it is a multizone ARR, we love being surrounded by the forest and our private driveway on King Hill RD.

We want to turn it into a Commercial Farm / Agritourism (in the future); were we can offer our visitors a cute style of small family farm life, were they are able to walk around our gardens, enjoy the farm stand with products from the farm, crafts, candles, natural skincare products...

We want to plant some vegetables, fruits, flowers, and everything that can be considered a drought proof plant. Last year we made some experiments so we can get to know our land, the sunny spots, the movement of the sunlight around the property and it was especially helpful that it was a very harsh summer because that helped us to check which plants are drought resistant since we won't be watering plants, they have to grow only with rain water.

Plenty of room for a good parking by side of our private driveway. (Very much like other farms around this area).

The shortest distance with a neighbor is 350ft (Google Earth) and we are completely enclosed by the forest, so nobody's privacy will be affected. And about 600ft (Google Earth) of driveway.

HOURS:

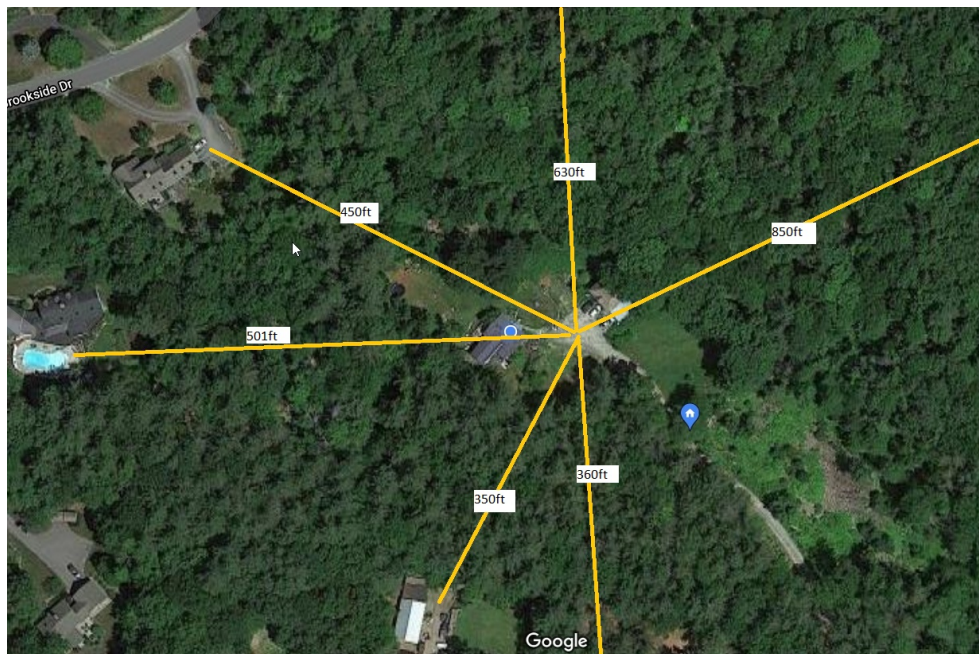
We would love to have a fully open schedule to be able to open all the week (Monday to Sunday) from 9am to 5pm. This is to have a wide range to operate and the people being able to come to the farm stand in harvesting season. Obviously we won't be able to open all these hours but since this is new for us we do not know yet what schedule will work the best.



SIGN:

The sign, approx. 4 square feet, will be placed in the entry of the driveway. The font type of the logo is Times New Roman and the corporate colors are gold, white and royal blue and of course its version in negative and B/W. (Will be printed both sides, that way will be able to be seen from both sides of the road).

NEIGHBORS & DISTANCE:



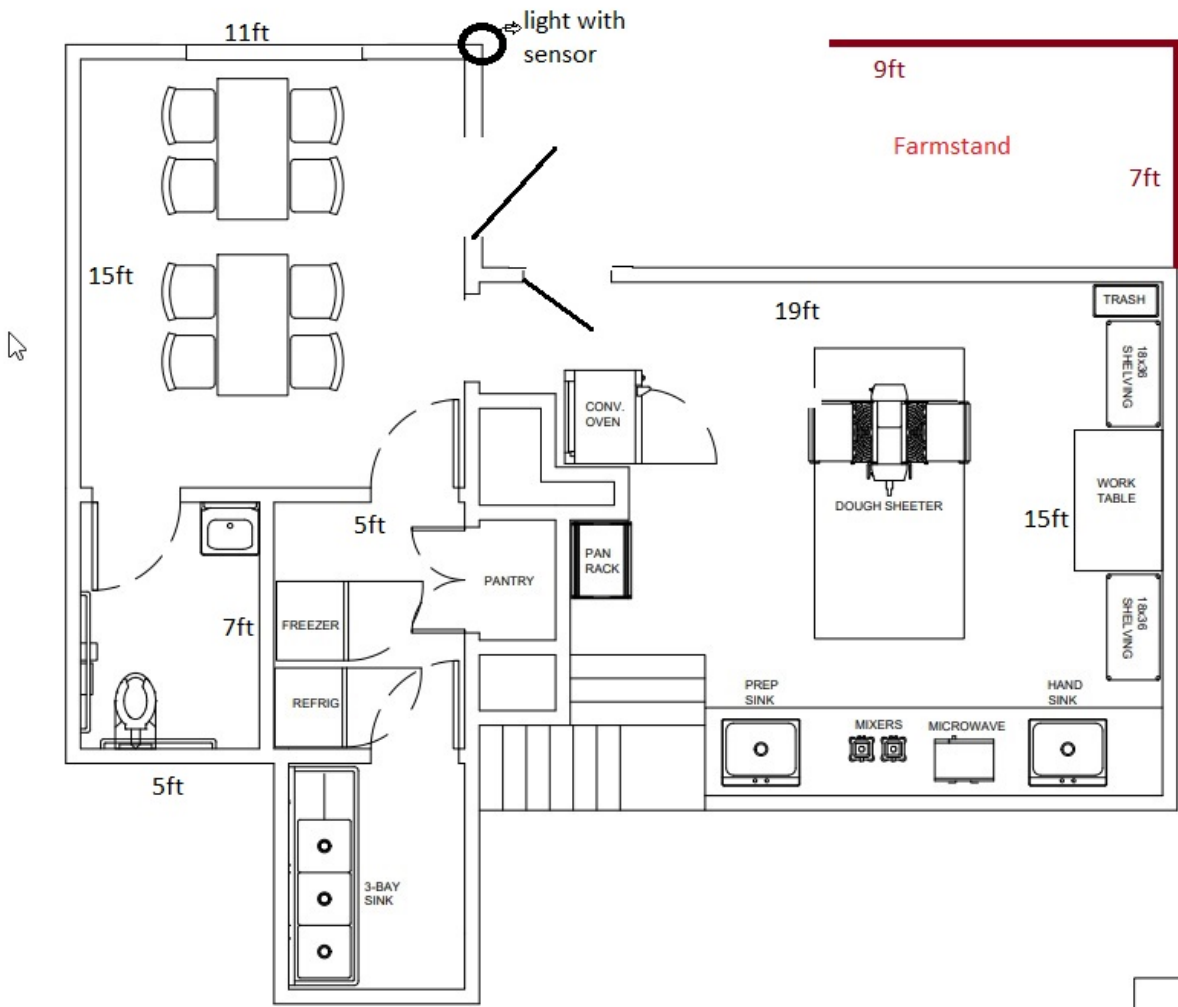
THE FARM STAND:



Will be located in the old porche of the log cabin, so we do not have to build one.



Light with motion sensor



Parking and lights:

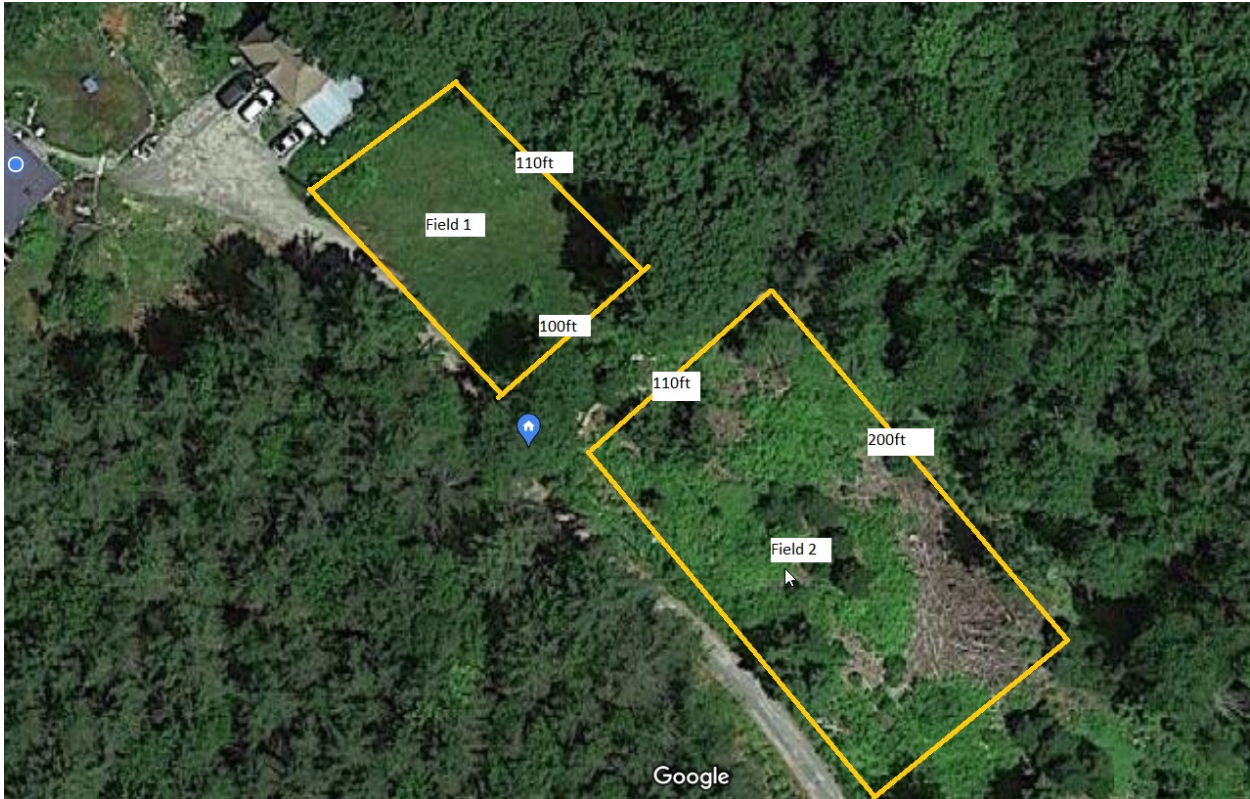


Additional parking will be added in spots 1-2 and 6-9 by adding gravel in those locations.

Farm Fields and location:

On field 1 and 2 I will be putting up a 5 ft fence to keep out animals :





Bregt Peter Kris Eerlingen
246 King Hill RD, NH
03257 - New London
+1(603) 369 - 9452