

PLANT LIST: 06/01/2021										
	Common Name	Symbol	Quantity	Nursery Size	Mature Size (Height x Spread)	dia. Calculated	Square Footage	points/plant (sf/4)		
Shrubs	<i>Myrica gale</i>	Sweet gale	SWG	7	#2	2'-3"H x 4'-5"S	3	6	1.5	
	<i>Myrica pennsylvanica</i>	Northern Bay Berry	NBB	1	3-4'	6'-8"H x 6'-8"S	4	12.5	3.125	
	<i>Vaccinium corymbosum</i> "Blue Jay"	Bluejay Highbush Blueberry	HBB	1	#6	6'-8"H x 6'-8"S	4	12.5	3.125	
	<i>Vaccinium corymbosum</i> "Patriot"	Patriot Mid-Height Blueberry	MBB	13	#3	3'-4"H x 3'-4"S	3	7	1.75	
	<i>Vaccinium angustifolium</i>	Low Bush Blueberry	LBB	45	#1	12'-18"H x 3'-4"S	2	3	0.75	
Perennials/groundcovers	<i>Alchemilla mollis</i>	Lady's Mantle	am	6	#1					
	<i>Astilbe</i> "Bridal Veil"	White Astilbe	av	9	#1					
	<i>Convallaria majalis</i>	Lily-of-the-Valley	cm	52	1 qt					
	<i>Geranium</i> "Bevan's Variety"	Bevan's Variety Cranesbill	gb	21	#1					
	<i>Hosta</i> "Guacamole"	Guacamole Hosta	hg	13	#2					
	<i>Tiarella cordifolia</i> "Elizabeth Oliver"	Elizabeth Oliver Foam Flower	ta	19	#1					

* Square Footage calculated from a pre-mature diameter



Bonin Architects
 210 Main Street, PO Box 2571,
 New London, New Hampshire
 03257
 290 Daniel Webster Hwy.
 Meredith, New Hampshire 03253
 603.526.6200
 www.boninarchitects.com
 info@boninarchitects.com

©2021 Bonin Architects & Associates PLLC

Copyright laws prohibit reproduction or use of this drawing and the architectural work embodied in it, in whole or in part, without the express written permission of Bonin Architects & Associates PLLC.

LAYTON RESIDENCE
 NEW LONDON, NH

GREGORY P. RUSNICA, PLA

N.H.L.I.C. NO. 100

REVISION SCHEDULE		
No.	Date	Description

DATE: 06-03-2021

SCALE: 1"=10'-0"

DRAWING SET REVISION:

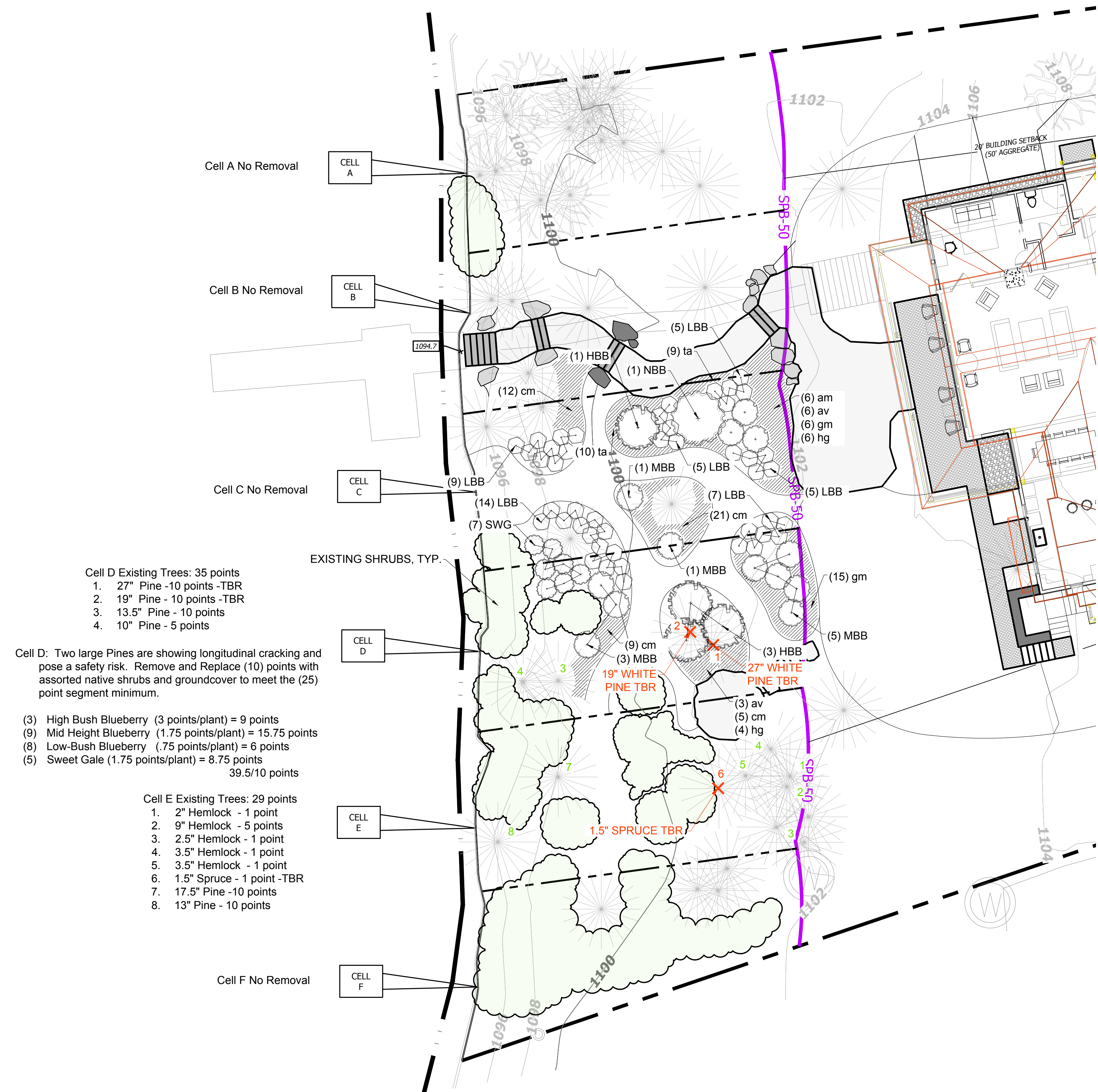
Tree Removal Permit

SHEET TITLE:

Waterfront Planting Plan

SHEET NUMBER:

L8.0



- Cell D Existing Trees: 35 points
- 27" Pine - 10 points -TBR
 - 19" Pine - 10 points -TBR
 - 13.5" Pine - 10 points
 - 10" Pine - 5 points

Cell D: Two large Pines are showing longitudinal cracking and pose a safety risk. Remove and Replace (10) points with assorted native shrubs and groundcover to meet the (25) point segment minimum.

- (3) High Bush Blueberry (3 points/plant) = 9 points
 - (9) Mid Height Blueberry (1.75 points/plant) = 15.75 points
 - (8) Low-Bush Blueberry (.75 points/plant) = 6 points
 - (5) Sweet Gale (1.75 points/plant) = 8.75 points
- 39.5/10 points

- Cell E Existing Trees: 29 points
- 2" Hemlock - 1 point
 - 9" Hemlock - 5 points
 - 2.5" Hemlock - 1 point
 - 3.5" Hemlock - 1 point
 - 3.5" Hemlock - 1 point
 - 1.5" Spruce - 1 point -TBR
 - 17.5" Pine - 10 points
 - 13" Pine - 10 points

Cell F No Removal